



Fusion

eFUSION AUTOMATIC SPARKLE SOFT WASH SYSTEM

eFusion



Features:

- Rollover Design Mounted on Railroad Style Gantry Tracks
- Stainless Steel Frame and Gantry
- (3) Three Soft Touch Brushes with SparkleSoft
- Multi-Axis Coordinated Motion Control for Brush Positioning
- Foaming Prewash System
- Operator Friendly Totally Programmable Wash Cycles
- SS Instructional Sign - Gantry Mounted
- SS "Please Wait" and "Enter Now" Sign
- Automatic Chemical Mixing System
- Independent Delivery Manifold for Presoak and Spot Free
- Manual Controls for Gantry Operation
- Web Enabled for Complete Remote Access to System Controls

The eFusion system is designed to effectively clean a vehicle using our unique SparkleSoft foam brushes. SparkleSoft is a strong, hushed and delicate product that glides over the vehicle's surface, enhancing its gloss and luster, wash after wash. The brushes employ the unique Multi-Axis Coordinated Motion Control to position them.

We've taken the durability factor of the stainless frame and added three (3) soft touch brushes and an optional wheel brush. The system is extremely versatile with performance options such as High Pressure Wash, Hot Wax, Spot Free Rinse and much more. The eFusion is totally programmable to fit your wash needs and to maximize your profits.



Three Brush Design

The SparkleSoft soft touch component of the eFusion has three brushes. Two sides and one top brush. The customer has the option to have side brushes only, top brush only or a combination of both top and side brushes on any wash cycle. The top brush will rotate one direction and then change directions as it approaches the rear of the vehicle for maximum cleaning and less potential for damage.



Complete Cross Over Coverage

Counter rotating side brushes cross over the center line of every vehicle for complete coverage.

sparkleSOFT

SparkleSoft foam is a strong, hushed and delicate product that glides over the vehicle's surface enhancing it's gloss and luster, wash after wash.





Soft Touch Brush Controls

The system uses a Multi-Axis Coordinated Brush Motion Control to adjust the top and side brushes to the exact contour of every vehicle. Each brush uses an amp sensing technique to stay in constant contact with the vehicle and with just the right amount of cleaning pressure to ensure a clean vehicle.



Side Brush Tilt Control

The side brushes have an air activated tilt cylinder to force them to a vertical position for better cleaning on the lower portion of the car. When the cylinder is not activated, the brushes are allowed to contour to the more angled upper sides of the vehicle.



Foam Bath or Presoak

The independent system designed for the eFusion has a line dedicated specifically to foam bath or presoak. The system uses multiple nozzles on the gantry to completely blanket the vehicle.



*All low pressure
PRODUCTS ARE DELIVERED
THROUGH INDEPENDENT
NOZZLES ... meaning little
or no waste.*



Total Gantry Speed Control

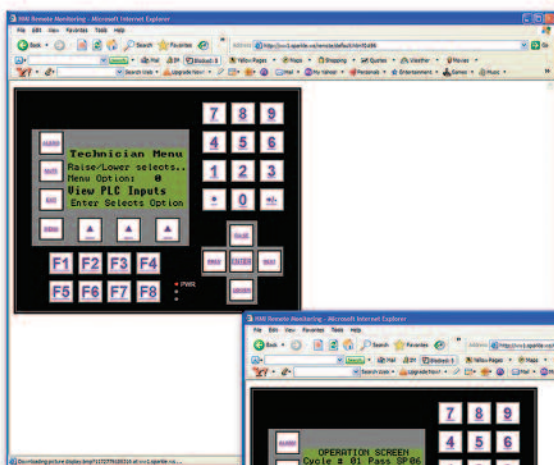
The speed at which the gantry travels is controlled and easily set on the Operator Interface Panel. Low-pressure functions can be delivered at a higher rate of speed than ever before. This, along with delivering the presoak and spot free rinse without dropping the boom, saves a great deal of valuable cycle time.

Operator Interface Panel (Red Lion)

The eFusion is equipped with an Operator Interface Panel (OIP) mounted on the unit's Electrical Control Center that allows the operator complete control. The comprehensive system puts you easily in charge...either on-site or on the web. Possessing web enabled capabilities permits complete access to system controls for monitoring or troubleshooting anytime web access is available.

Web Enabled

With a DSL line on site, you can stay in touch with your eFusion anywhere web access is available. Perform all the Operator Interface functions as if you were standing at the control panel. Service and troubleshooting becomes a much simpler task when factory service technicians can be on-line with you and see exactly what you see.

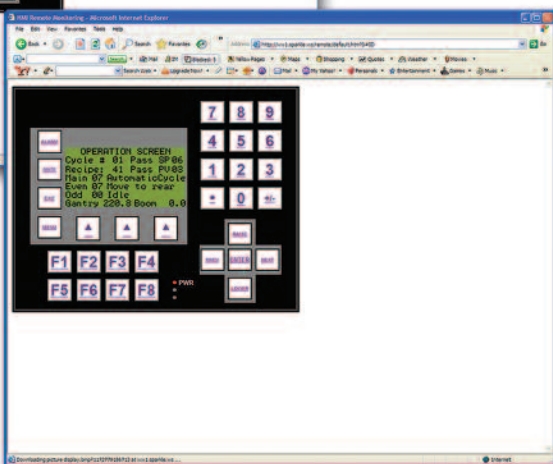


Tech Menu / Testing

The testing portion is a tremendous feature. From the interface panel, the operator can turn on any of the wash functions and perform a variety of other testing or troubleshooting tasks.

Wash Data / Operation

The Wash Data section will allow the operator to monitor the wash in progress on the Operation screen, displaying cycle and wash pass and action of that pass.



eFusion



Wheel Scrub Brushes

The counter rotating scrubbing wheel brushes perform tremendously on even the dirtiest wheels. The gantry positions itself so the specialized wheel cleaning brushes can gently penetrate the most intricate wheel design. The relatively slow speed rotation while the brush is in contact with

the wheel spins in one direction and then changes direction to thoroughly clean the entire wheel.

High Pressure on Wheel Brushes

Inside each brush are 3 high pressure nozzles that completely cover the wheel and tire as the brush extends and gives you that extra blast of cleaning power.



Hot Wax/Low Pressure Wax System

A distinctive spray pattern is provided by the Hot Wax system as this unique product is delivered through the gantry mounted rain arch. This option will provide faster drying, insure a smooth even coverage over the entire vehicle and is proven to gather high approval ratings from customers.

PREFERRED OPTIONS

- Low Pressure/Hot Wax System
- Triple Foam Bath or Conditioner
- Foaming Tire Cleaner Applicators On-board
- High Pressure Wash - Top and Sides (18GPM or 36 GPM)
- High Pressure Undercarriage Spray System
- Wheel Brush
- Wheel Brush W/ 3 High Pressure Nozzles
- Presoak Heater System
- Circulating Presoak System
- Wind Wizard Blower - Free Standing or On-Board



Triple Foam Bath or Conditioner

Dazzle your customers with the magic of a tri colored foam application. Customers are amazed at the incredible array of colors as the specially designed applicator blends the Red, Gold and Blue conditioning foam into a soft, vibrant blanket to protect your vehicle's finish.



High Pressure Rinse

The eFusion's rinsing is a fixed arch that offers complete coverage with either low or high pressure delivery. There are several rinse cycle options. One is sure to fit your needs.

On-Board Tire Cleaner Applicators: (CTA)

High strength Tire/Wheel Cleaner is applied to the wheels, tires and lower portion of the vehicle. The Tire Cleaner Applicators coupled with the Wheel Scrub and On-Board Rocker Panel Sprayers will enable the eFusion to "out perform" any other system in the industry on wheels and tires.



Spot Free Rinse (left)

The final rinse is delivered in a distinctive cone pattern spray on top and wide angle nozzles on the sides for a thorough spot free rinse.

Blower (above)

Complete the wash with an effective blower system. The Wind Wizard comes in an on-board package as shown or as a freestanding system.



Electrical Required:

eFusion Main Supply

- 30 Amp, 3ph , 208/230V (17/14 Amp Actual Draw)
- 20Amp, 1 Pole Breaker, 110V (10 Amp Actual Draw)

Optional High Pressure Wash System

- 1 - 15 Hp / 18 GPM Pump / 1000 PSI (69 Bar)
- 60 Amp, 3 Ph 208/230Volt (40/37 Amp Actual Draw)

Optional Dual Pump High Pressure Wash System

- 2 - 15 Hp / 18 Gpm Pump
- 125 Amp, 3 Ph 208/230 Volt (80/74 Amp Actual Draw)

Water Line Required:

- 1" (26mm) Water - Min. Pressure 40 psi (2.75bar) - Max. 60 psi (4.5 bar)
- Max Flow Rate: 12 Gpm (46 Lpm without High Pressure)
- 38 Gpm (144 Lpm with High Pressure)

Air Line Required:

- 1/2" (13mm) Air - Min. Pressure 80 psi (5.5 bar) - Max. 120 psi (8 bar)
- Max Flow Rate: 10 cfm (.283 cubic meter)

Dimensions:

Chemical Dosing System:

36" wide X 30" high Wall Mounted (914mm X 762mm)

Electrical Control Panel:

24" Wide X 24" High (610mm X 610mm)

Gantry:

154" wide X 62" deep X 113" high
(3.91cm wide X 157cm X 2.69m)

Vehicle Height Clearance: 84" (2.13m)

Recommended Bay Dimensions:

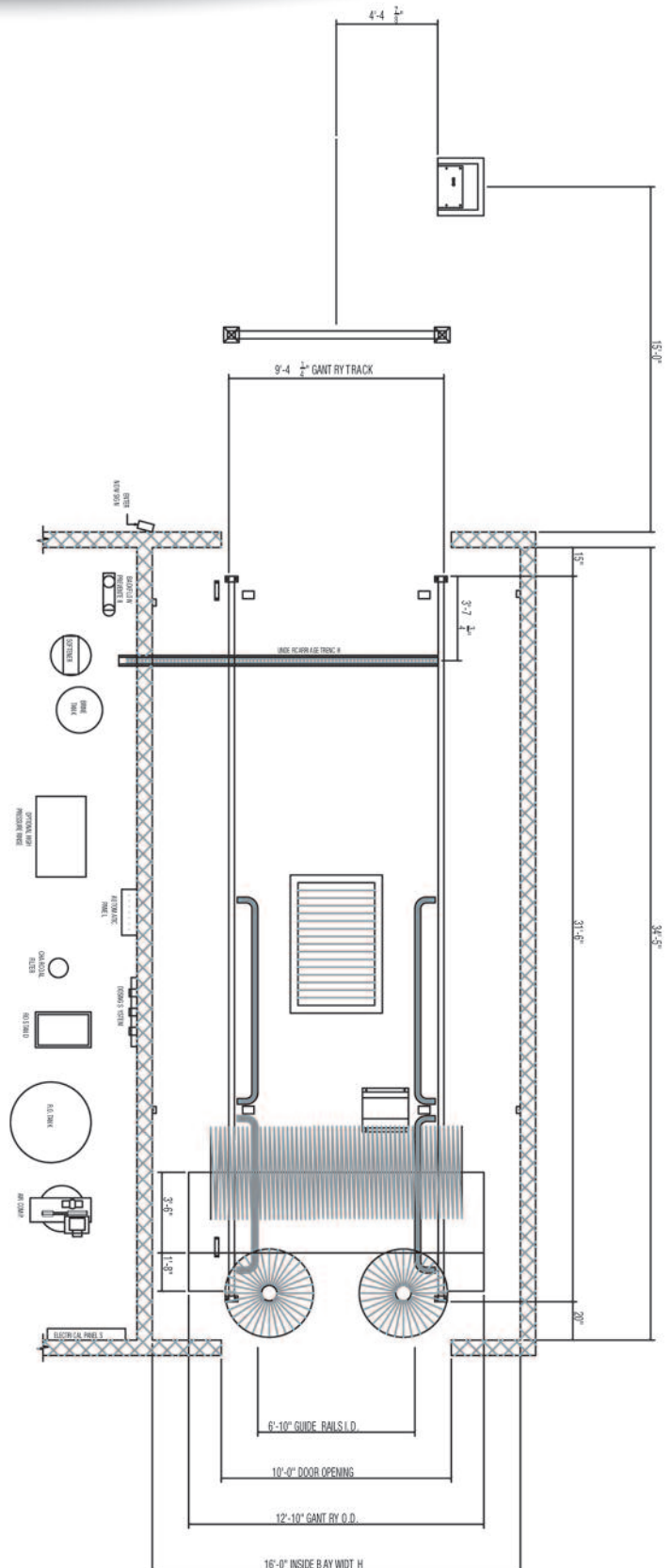
(Gantry Track - 31' 6" (8.53m)

(Contact JCC for lesser dimensions)

Width: 16' (4.88m) (15' min) (4.57m)

Height: 12' (3.66m) (11' min) (3.35m)

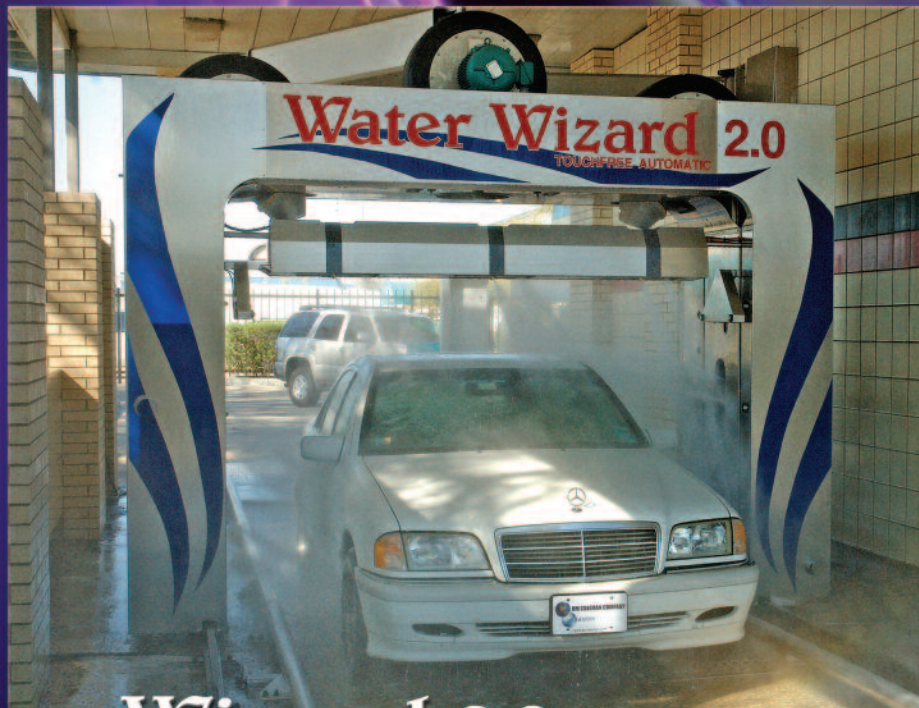
Min. Door Opening Height: 10' (305cm)



**Take a look at the complete line of Jim Coleman Company's
In-Bay Automatic Wash Systems**



The FusionX system is designed around the cleaning success of the Water Wizard 2.0 high pressure automatic. Customers can choose any type of wash they desire, soft touch only, high pressure only or any combination thereof according to the wash cycles the operator has created.



Water Wizard 2.0 *AUTOMATIC TOUCHFREE*

The Water Wizard 2.0 is equipped with rocker panel sprayers, high pressure undercarriage cleaning and features scrubbing, oscillating nozzles that vigorously the vehicle from different angles giving it more cleaning power.



JIM COLEMAN COMPANY

HANNA

*In the interest of product improvement, Jim Coleman Company reserves the right
to modify equipment specifications without notice.*

**5842 W. 34TH STREET
713-683-9878**

**HOUSTON, TX 77092
800-999-9878**

www.jcolemanco.com