



Water Wizard

TOUCHLESS AUTOMATIC 2.0

Water Wizard 2.0

TOUCHLESS AUTOMATIC 2.0



STANDARD FEATURES

Every Water Wizard 2.0 touch-free automatic is loaded with standard features. It includes most of the customer requested features and then some. Every unit is equipped with Undercarriage and Rocker Panel Sprayers. The undercarriage provides a high pressure under the vehicle wash. It can be on or off during any wash cycle. The On Board Rocker Panel Sprayers thoroughly clean the wheels, tires, and lower part of the vehicle with controlled efficiency.



The specially designed wash boom with high impact, zero degree oscillating nozzles will rotate and attack the dirt on the front and rear of the vehicle. An additional "Bug Pass" can be programmed, front and rear, to provide extra cleaning when seasonal changes require it.



Left: High pressure under-carriage wash.

Below: On-board Rocker Panel Blasters thoroughly clean the target area

The brightly lit LED scrolling sign and Enter Now/Please Wait bay entrance sign are in constant communication with the customer in the bay and the person next in line.



STANDARD FEATURES

The scrubbing action oscillating nozzles are among the many advantages provided standard with the Water Wizard 2.0. Moving the high pressure water so it attacks the dirty vehicle from different angles serves to peel the dirt away and get into areas that straight on spray patterns do not touch.



The scrubbing action oscillating nozzles sweep back and forth over the entire vehicle as the wash gantry passes over the vehicle.



Note the incredible coverage and the unique application. As the gantry travels, a smooth even blanket of hot pre-soak coats the vehicle loosening grime and dirt.



Presoak nozzles are independent of the high pressure nozzles providing an effective and efficient delivery system. The nozzles change direction as the gantry moves to ensure a complete covering even in hard to reach areas.

Presoak is applied on both sides and the top simultaneously.



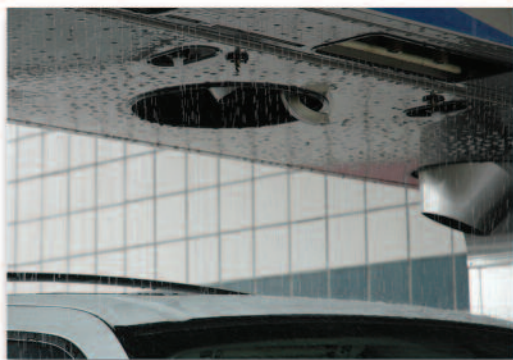
SCRUBBING ACTION OSCILLATING NOZZLES

The entire vehicle will receive a good scrubbing as the high pressure water creates friction upon impact with the vehicle's surface. The back and forth motion of the zero degree oscillating spray pattern attacks the dirt and grime from all different angles.

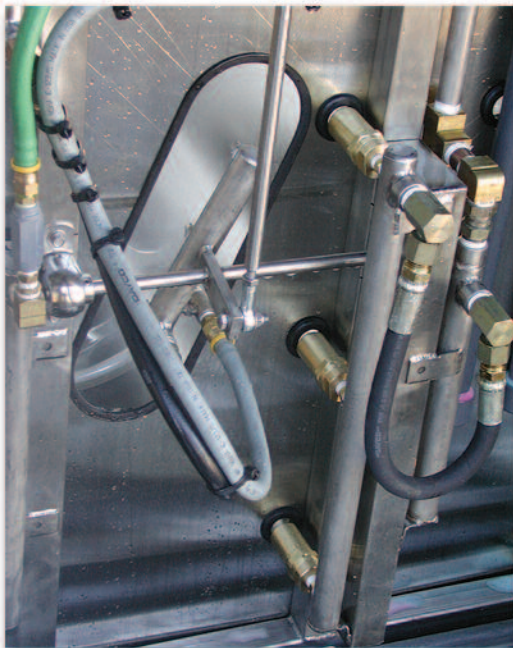


The vehicle is being scrubbed clean with high pressure water.





A distinctive spray pattern is being delivered by the Low Pressure Hot Wax System through the gantry mounted rain arch. This option will provide faster drying, insure a smooth even deposition over the entire vehicle and is proven to elicit high approval ratings from customers. It is available for heated or non-heated products.



Zero degree Rocker Panel nozzles oscillate internally creating a 20-25 degree spray pattern with no moving parts.



*Above: On-board tire cleaning applications.
Below: Zero degree oscillating nozzles deliver an extra blast of cleaning power.*



PREFERRED OPTIONS

- Wizard Contour System
- Magic of Color Triple Shine Foaming Conditioner System
- Air Assisted Foaming Tire Cleaner
- Auto Height Adjustment System
- Pre-Soak Heater System
- Two Step Pre-Soak Delivery System
- Circulating Pre-Soak System
- Zero Degree Oscillating Rocker Panel Nozzles
- Auto Paging System
- Door Controls
- Winter Wizard Freeze Control System
- Entry Wizard 2.0 Automatic Entrance Controller
- Hot Water High Pressure Wash
- Zero Degree Oscillating Nozzles on Wash Gantry

ADDITIONAL PERFORMANCE OPTIONS

HOT WAX SYSTEM

GLASS TREATMENT SYSTEM

TIRE CLEANER

WHEEL SCRUB



The Wheel Blaster thoroughly cleans wheels with amazing results.

ADDITIONAL PERFORMANCE OPTIONS

Adjusting to specific vehicle dimensions ensures exceptional cleaning on subsequent passes.



AUTO HEIGHT ADJUSTMENT

Clean lower height vehicles as well as you do full size SUV's! The Water Wizard 2.0's control system scans and profiles the height of each vehicle at the beginning of the wash cycle. The system will automatically adjust the wash boom to multiple vehicle heights.

WIZARD CONTOUR SYSTEM

Now the contouring option takes command. Observe how closely the wash boom follows the contour of the vehicle, maximizing the scrubbing action of the high-pressure wash. Every vehicle that enters the Water Wizard 2.0, regardless of vehicle height, receives the same quality wash. Maximum cleaning in a touchfree automatic depends on quality hot pre-soak and good high pressure scrubbing action. Moving the nozzles closer to the vehicle during the high pressure passes produces consistent and effective cleaning power.



MAGIC OF TRIPLESHINE

Dazzle your customers with the magic of Tripleshine. Customers are amazed at the incredible array of colors as the specially designed applicator blends the Red, Gold and Blue conditioning foam into a soft, vibrant blanket to protect your vehicle's finish.

WIND WIZARD

Complete the wash with an effective blower system. The Wind Wizard comes in an on-board package as shown or as a freestanding system. The programmable rotating center nozzle

makes it easy and effective to dry the vehicle from both directions. The stainless steel reinforced molded housing provides greater safety and less noise.



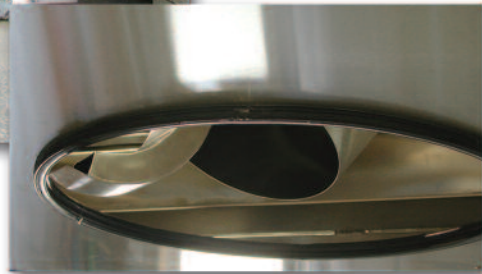
Wind Wizard on-board blower has three producers for complete vehicle coverage.



Side blowers can be easily adjusted for maximum performance.



Center producers sweep distance is easily controlled



Center producer rotates 360 degrees for perfect coverage on the front and rear of the vehicle. Air scoop helps to eliminate residual water from dropping on clean, dry vehicle.

FEATURES

(On-Board Blower)

- Stainless Steel Re-enforced molded producer housing for greater safety and less noise
- 10 HP TEFC Motors with Welded Steel Fans
- Open Design Allows Easy Access
- Dynamically Balanced Fan

- Can Dry Vehicle from Both Directions
- Programmable Rotating Center Nozzle
- Heavy Duty Stainless Steel Safety Screen
- Includes Motor Starters
- Air Flow: 10 HP Motor – 3,800 CFM Per Nozzle
- Air Speed: 155 MPH

(Floor Mount Blower)

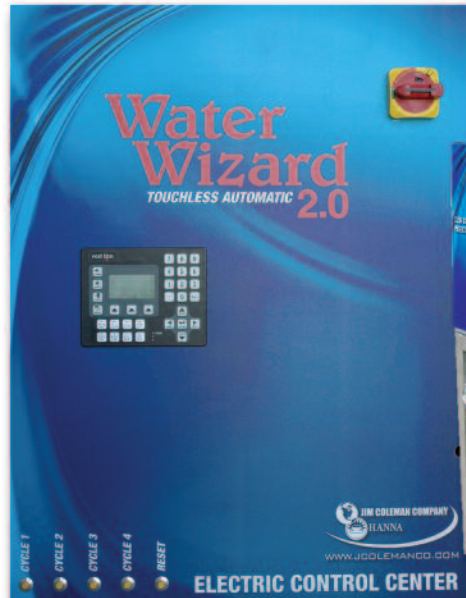
- Same features as on-board blower except motor starter package is optional
- Overall Height: 127 1/2"
- Overall Width: 184 1/2"
- Maximum Clearance: 90" High X 115" Wide

TOTAL OPERATOR CONTROL

The comprehensive Operator Interface Panel, located on the electrical control unit, puts you easily in charge...either on-site or via the web. It is so simple to use

and a great tool to use when designing wash recipes or trouble shooting. Critical areas are pass-word protected

Water Wizard 2.0
Pumping Unit with
Electrical Control Center



The Water Wizard 2.0 pumping unit is a modular, compact equipment package. Mounted on a stainless steel frame-work are the pumps, motors and chemical mixing systems that are pre-plumbed and pre-wired and ready to go.

Possessing web enabled capabilities permits complete access to system controls for monitoring or troubleshooting. Anyplace web access is available.

WEB ENABLED

Multiple menus enable you to review and modify wash recipes, adjust timers and counters, view revenue, observe system operations, monitor electrical equipment and test any of the wash's functions. Other options such as blowers, door controls, reclaim systems and other support equipment are also easily controlled with the Operator Interface Panel.



BUILT TOUGH

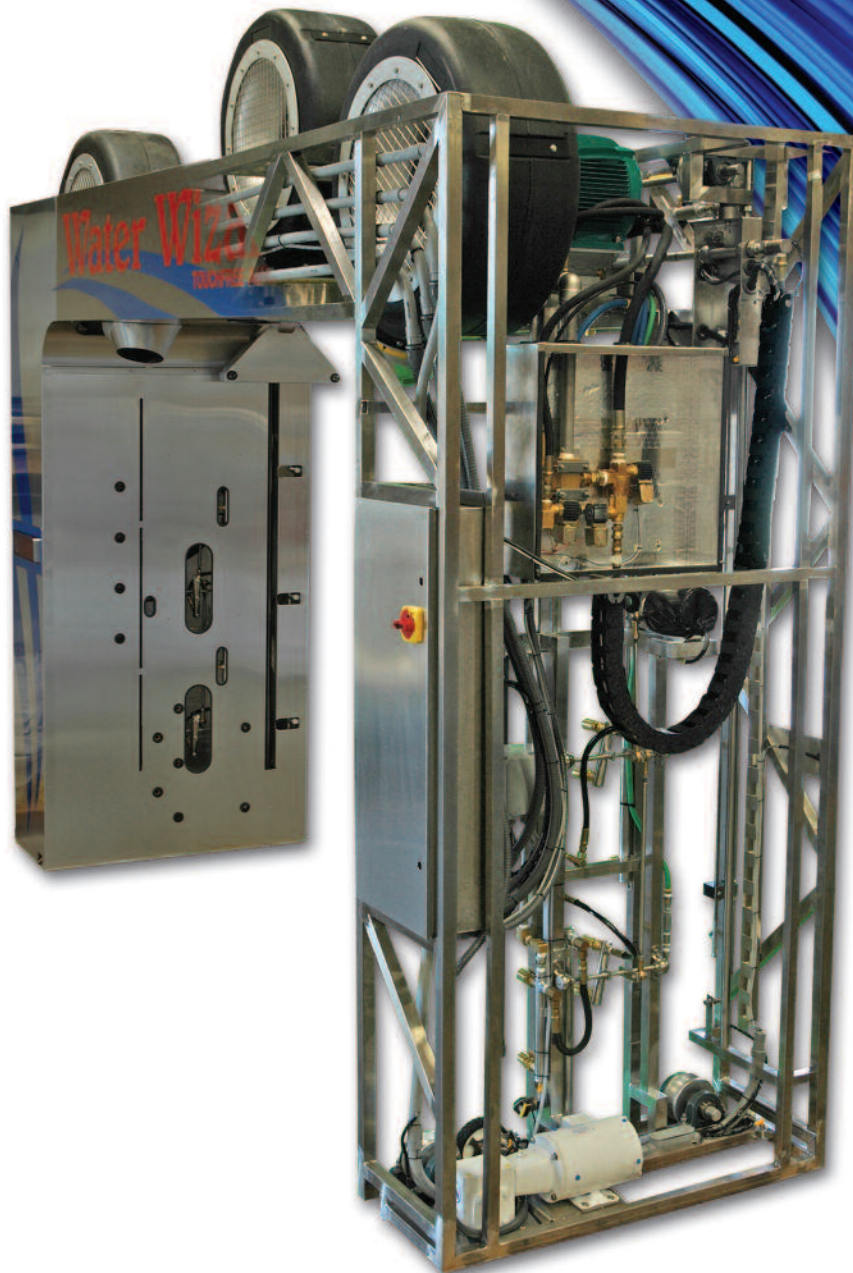
The Water Wizard 2.0® wash gantry is constructed of a stainless steel framework and is built to last for many years to come. Quality craftsmen construct each frame to exacting standards insuring a consistent product.

Wide Open Spaces

Most components have easy access to inspect and to perform preventative maintenance, as shown in the cut-a-way picture. Side panels are completely removable making servicing the Water Wizard 2.0 a simple task.

Stainless Skins

Over the stainless framework is a stainless steel skin. It is an attractive, durable and easy to clean protective covering. Because the stainless skin is a renewable surface, gantry custom graphics can be added or changed at any time. This will give your Water Wizard a fresh new look for a minimal cost.



FEATURES

- Adjusts to the length of the vehicle (Auto Height or Contouring Optional)
- Time Saving Presoak and Spot Free Delivery System
- All Stainless Steel Frame and Gantry
- Cat 3535 Pump with 25 HP Motor
- High Pressure Rocker Panel Sprayer On-Board
- High Pressure Undercarriage Spray System
- 3" Aluminum Guide Rails
- Galvanized Railroad Style Gantry Track
- SS Scrolling Message Sign on Gantry
- SS "Please Wait" and "Enter Now" Sign
- SS Chemical and Water Holding Tank
- Independent Foamy Presoak System
- Automatic Chemical Mixing System
- SS Electrical Control Center
- Web Enabled Operator Interface Allows Complete Control
- Manual Override for Gantry Operation
- Water Saver Medium Pressure Rinse

**Water
Wizard**
TOUCHLESS AUTOMATIC 2.0

Water Wizard

TOUCHLESS AUTOMATIC 2.0

TYPICAL LAY-OUT OF WATER WIZARD 2.0 BAY

Electrical Required:

If Water Wizard has 5kw Presoak Heater Provided:

Fusible Disconnect Switch w/125 Amp Dual Element Fuses Recommended

- 208/230V 125 Amp, 3ph, (80Amp Actual Draw)
- 120V 20Amp, 1 Pole Breaker, (10 Amp Actual Draw)
- 380/415V 100 Amp, 3ph, (60Amp Actual Draw)
- 220V 15 Amp, 1 Pole Breaker, (8 Amp Actual Draw)

Optional Hot Wax System

- 30 Amp, 3ph, 208/230V
- Optional Water Tank Heater (5KW)
- 20 Amp, 3ph, 208/230V

Water Line Required:

- 1" (26mm) Water - Min. Pressure 40 psi (2.75 bar)
Max. 60 psi (4.5 bar)
- Max Flow Rate: 32 gpm (122 lpm)

Dimensions:

Pump Plant : 30" wide X 60" long X 70" high
(762mm X 1524mm X 1778mm)

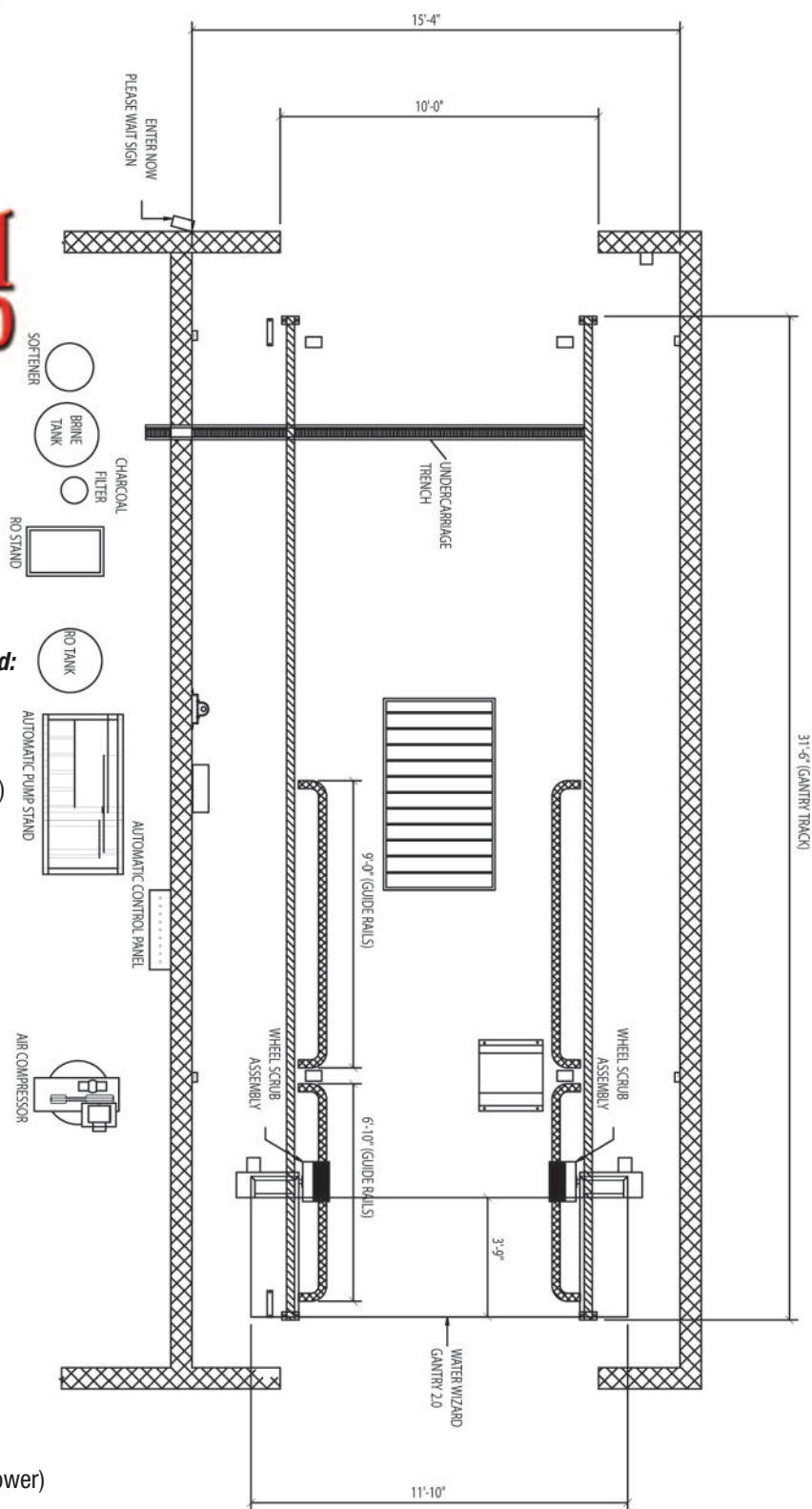
Electrical Panel : 29" wide X 36" high X 8" deep
(736mm X 736mm X 203mm)

Gantry: 11'10" wide X 45" deep X 8'10" high
(10'8" high w/blower)
(3.61m X 1.14m X 2.69m) (3.25m)

Vehicle Height Clearance: 84" (2.13m)

Recommended Bay Dimensions:

Length: 34' (10.36m)
Width: 15'4" (4.67m) (14' min) (4.27m)
Height: 12' (3.66m) (11' min) (3.35m)
Min. Door Opening Height 9'6" (2.9m)
With Blowers & Shipping Wheels 10'2"



EQUIPMENT SPECIFICATIONS

The Water Wizard 2.0 Electrical requires two electrical connections into the main disconnect switch. The connections go into the Electrical Control Panel and hook up to the Safety Disconnect Switch, located on the upper right of the Electric Control Center.

Take a look at the complete line of Jim Coleman Company's In-Bay Automatic Wash Systems

eFusion

AUTOMATIC SPARKLE SOFT WASH SYSTEM



The eFusion is designed to effectively clean a vehicle using our unique SparkleSoft foam brushes. SparkleSoft is a strong, hushed and delicate product that glides over the vehicle's surface, enhancing gloss and luster.

FusionX

FUSION X COMBINATION WASH SYSTEM



The FusionX system is designed around the cleaning success of the Water Wizard 2.0 high pressure automatic. Customers can choose any type of wash they desire, soft touch only, high pressure only or any combination thereof according to the wash cycles the operator has created.



JIM COLEMAN COMPANY

HANNA

*In the interest of product improvement, Jim Coleman Company reserves the right
to modify equipment specifications without notice.*

**5842 W. 34TH STREET
713-683-9878**

**HOUSTON, TX 77092
800-999-9878**

www.jcolemanco.com